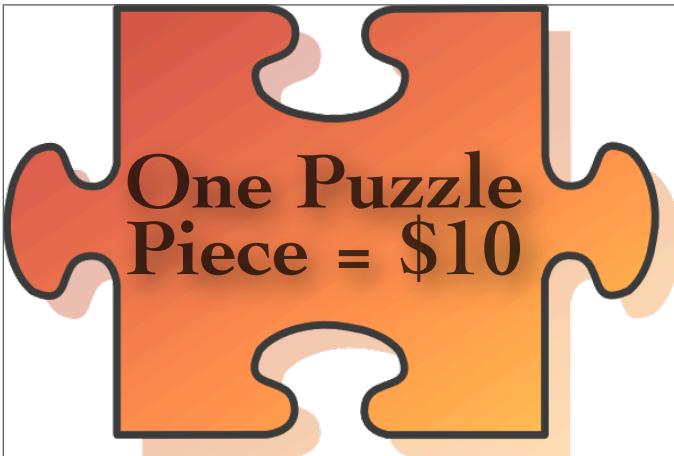


# Be a Piece of Sarah's Miracle

Help Sarah put together her puzzle!

Order as many pieces as you feel moved to order. Your piece(s) will come to you between November 17th & 23rd. Please feel free to sign the back of your piece(s) before returning them. When the puzzle is complete, it will be framed and remain in Baby's bedroom as a reminder of all of you who were such a huge PIECE of this miracle. We can't wait for Baby to learn who helped bring him/her home!



Accepted forms of payment:

Cash

Paypal - [sabailey24@hotmail.com](mailto:sabailey24@hotmail.com)

Or go to

[www.TheOwlProjectforBabyBailey.weebly.com](http://www.TheOwlProjectforBabyBailey.weebly.com)



## Thank you for supporting The Owl Project

Sarah Bailey was born to love children. She has dedicated her life to caring for, teaching, and supporting children and their families. There is never a child who passes Sarah's world without a smile, an offered hand, a story read, a silly idea, or helpful encouragement. For as long as she can remember Sarah has gone above and beyond for every child she has had the privilege to encounter. Now it's time for a child in need of such amazement to feel such love and devotion from the mother Sarah has dreamt of being. A bond and partnership between mother and child, between Sarah and Baby Bailey, is a miracle that has been patiently awaited for many years. Please help be a part of this miracle and help us in bringing Baby Bailey Home.

Love,

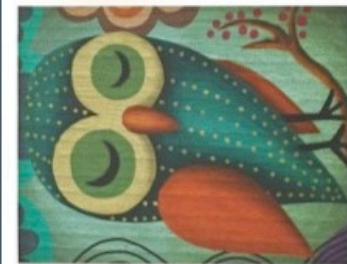
The Owl Project  
Cat Wood and Meghan Young

[theowlprojectforbabybailey@gmail.com](mailto:theowlprojectforbabybailey@gmail.com)

[www.theowlprojectforbabybailey.weebly.com](http://www.theowlprojectforbabybailey.weebly.com)

The Owl Project

FOR BABY BAILEY



"THERE ARE NO EXTRA PIECES IN THE UNIVERSE. EVERYONE IS HERE BECAUSE HE OR SHE HAS A PLACE TO FILL, AND EVERY PIECE MUST FIT ITSELF INTO THE BIG JIGSAW PUZZLE." - DEEPAK CHOPRA

